

RGA440-CYC

4Q SCR NEMA 4X Adjustable Speed Drive
for PMDC or Field Wound Brush Motors

Specifications

Model	Line Voltage (VAC)	Armature Voltage Range (VDC)	Continuous Armature Current (Amps)	Armature Horsepower Range
RGA440-3-CYC	115	0 - 90	3.0	1/20 - 1/8
	230	0 - 180		1/10 - 1/4
RGA440-10-CYC	115	0 - 90	10.0	1/4 - 1
	230	0 - 180		1/2 - 2

AC Line Voltage.....115/230 VAC ± 10%, 50/60 Hz, single phase
 Form Factor.....1.37 at base speed
 Field Voltage with 115 VAC line voltage.....50 or 100 VDC
 with 230 VAC line voltage.....100 or 200 VDC
 Maximum Field Current.....1 Amp
 Acceleration Time Range.....0.5 - 15 seconds
 Deceleration Time Range.....0.5 - 15 seconds
 Analog Input Voltage Range (Signal must be isolated).....0 to ± 10 VDC
 Input Impedance (S0 to S2).....32K ohms
 Load Regulation with Armature Feedback.....1% base speed
 with Tachogenerator Feedback.....0.1% base speed
 Speed Range with Armature Feedback.....50:1
 with Tachogenerator Feedback.....60:1
 Vibration (0 - 50 Hz).....0.5G maximum
 (>50 Hz).....0.1G maximum
 Ambient Temperature Range.....10°C - 55°C
 Weight.....7.8 lbs
 Safety Certifications.....UL/cUL Listed Equipment, file # E132235
 CSA Certified Component, file # LR41380

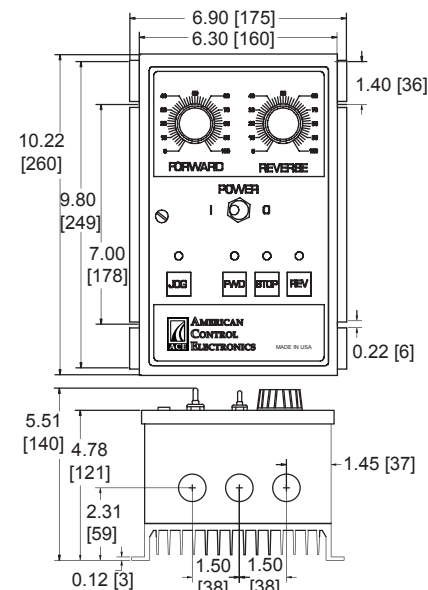
Drive Model	Short Circuit Current Rating Maximum Current, A	Maximum Voltage, V	Types of Branch Circuit Protection	Maximum Rating of Overcurrent Protection
RGA440-10-CYC	10,000	240 V	Non-Time Delay KS Fuse Inverse Time Circuit Breaker	30 A

Safety Warnings

READ ALL SAFETY WARNINGS BEFORE INSTALLING THIS EQUIPMENT

- DO NOT INSTALL, REMOVE, OR REWIRE THIS EQUIPMENT WITH POWER APPLIED. Have a qualified electrical technician install, adjust and service this equipment. Follow the National Electrical Code and all other applicable electrical and safety codes, including the provisions of the Occupational Safety and Health Act (OSHA), when installing equipment.
- Circuit potentials are at 115 or 230 VAC above earth ground. Avoid direct contact with the printed circuit board or with circuit elements to prevent the risk of serious injury or fatality. Use a non-metallic screwdriver for adjusting the calibration trim pots. Use approved personal protection equipment and insulated tools if working on this drive with power applied.
- Reduce the chance of an electrical fire, shock, or explosion by using proper grounding, over-current protection, thermal protection, and enclosure. Follow sound maintenance procedures.
- ACE strongly recommends the installation of a master power switch in the line voltage input. The switch contacts should be rated for 250 VAC and 200% of motor nameplate current.
- Removing AC line power is the only acceptable method for emergency stopping. Do not use regenerative braking, decelerating to minimum speed, or coasting to a stop for emergency stopping. They may not stop a drive that is malfunctioning. Removing AC line power is the only acceptable method for emergency stopping.
- Line starting and stopping (applying and removing AC line voltage) is recommended for infrequent starting and stopping of a drive only. Regenerative braking, decelerating to minimum speed, or coasting to a stop is recommended for frequent starts and stops. Frequent starting and stopping can produce high torque. This may cause damage to motors.
- Do not disconnect any of the motor leads from the drive unless power is removed or the drive is disabled. Opening any one lead while the drive is running may destroy the drive.
- The field output is for shunt wound motors only. Do not make any connections to F1 and F2 when using a permanent magnet motor.
- Change voltage switch settings only when the drive is disconnected from AC line voltage. Make sure both switches are set to their correct position. If the switches are improperly set to a lower voltage position, the motor will not run at full voltage and may cause damage to the transformer. If the switches are improperly set to a higher voltage, the motor will overspeed, which may cause motor damage, or result in bodily injury or loss of life.
- Under no circumstances should power and logic level wires be bundled together.
- This product does not have internal solid state motor overload protection. It does not contain speed-sensitive overload protection, thermal memory retention, or provisions to receive and act upon signals from remote devices for over temperature protection. If motor protection is needed in the end-user product, it needs to be provided by additional equipment in accordance with NEC standards.

Dimensions



ALL DIMENSIONS IN INCHES [MILLIMETERS]

Installation

Mounting

NEMA 4X cased drives come with three 0.88 inch (22 mm) conduit holes at the bottom of the case. The drives may be vertically wall mounted using the four 0.19 inch (5 mm) slotted holes on the attached heat sink. For loads less than 5 amps, the drives may be bench mounted horizontally or operated without mounting.

- Install the mounting screws.
- For access to the terminal strip, turn the slotted screw on the front cover counterclockwise until it is free from the case. The right side of the cover is hinged to the case. Pull the slotted screw to open the case.
- Carefully remove the conduit knockouts by tapping them into the case and twisting them off with pliers.
- Install conduit hardware through the 0.88 inch (22 mm) knockout holes. Connect external wiring to the terminal block.
- Grasp the slotted screw and tilt the front cover back into place. Avoid pinching any wires between the front cover and the case.
- Turn the slotted screw clockwise until tight to secure the front cover.
- Set the POWER switch to the OFF position before applying AC line voltage.

Wiring

Use 18 - 24 AWG wire for logic wiring.

Use 14 - 16 AWG wire for AC line (L1, L2 115V, L2 230V) and motor (A1, A2, F1, F2) wiring.

Shielding Guidelines

As a general rule, it is recommended to shield all conductors. If it is not practical to shield power conductors, it is recommended to shield all logic-level leads. If shielding of logic-level leads is not practical, the user should twist all logic leads with themselves to minimize induced noise. Refer to the user's manual for details on earth grounding shielded wires and filtering.

Fusing

RGA440-CYC series drives provide on board fusing for the AC line. Fuses are fast acting fuses.

RGA440-3-CYC models contain fuses rated for 8A at 250 VAC. RGA440-10-CYC models contain fuses rated for 20A at 250 VAC.

Connections

POWER (BOTTOM BOARD)

Line Input
Connect the AC line power leads to terminals 1 and 2 if using 115 VAC line power or to terminals 1 and 3 if using 230 VAC line power.

Motor

Connect the DC armature leads to terminals A1 and A2. If the motor does not spin in the desired direction, power down the drive and reverse these connections.

Field

At 115 VAC, connect the field leads to terminals F1 and L1 for a 50 VDC field or to F1 and F2 for a 100 VDC field. At 230 VAC, connect the field leads to terminals F1 and L1 for a 100 VDC field or to F1 and 2 for a 200 VDC field.

Do not make any connections to F1 and F2 if using a permanent magnet motor.

LOGIC (BOTTOM BOARD)

Tachogenerator

Using tachogenerator feedback improves speed regulation from approximately 1% of motor base speed to 0.1% of motor base speed. Use tachogenerators rated from 7 VDC per 1000 RPM to 50 VDC per 1000 RPM. Connect the tachogenerator to terminals T1 (positive) and T2 (negative).

LOGIC (TOP BOARD)

Forward Limit Switch

Connect a normally closed limit switch to terminals 20 and 22. If no forward limit switch is desired, use a jumper.

Reverse Limit Switch

Connect a normally closed limit switch to terminals 21 and 22. If no reverse limit switch is desired, use a jumper.

Remote Jog (Optional)

Connect a normally open pushbutton to terminals 18 and 19. Close the pushbutton to enter JOG mode.

Remote Forward Start (Optional)

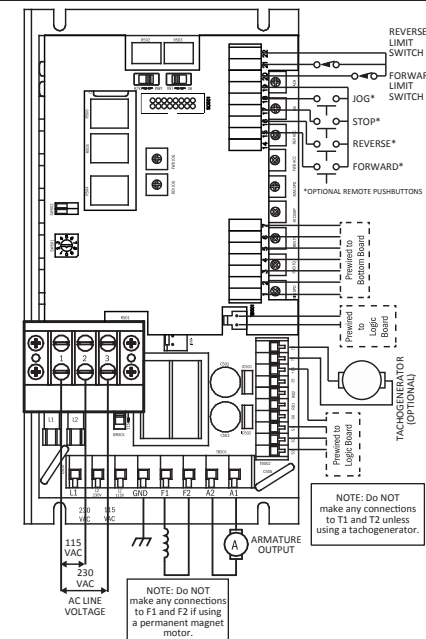
Connect a remote normally open pushbutton to terminals 15 and 19. Close the pushbutton for forward operation.

Remote Reverse Start (Optional)

Connect a remote normally open pushbutton to terminals 15 and 19. Close the pushbutton for reverse operation.

Remote Stop (Optional)

Connect a remote normally open pushbutton to terminals 15 and 19. Close the pushbutton to stop.



Startup

SELECT SWITCHES (BOTTOM BOARD)

Input Voltage Select (SW501, SW502)

Set the voltage switches SW501 and SW502 to either 115 or 230 to match the AC line voltage.

Armature Voltage Select (SW503)

Set the voltage switch SW503 to either 90 or 180 to match the maximum armature voltage.

Feedback Select (SW504)

Set the feedback select switch SW504 to either ARM for armature feedback or TACH for tachogenerator feedback.

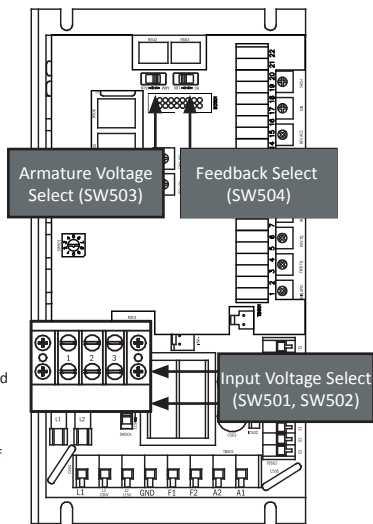
SELECT SWITCHES (TOP BOARD)

Dwell Time Select (SW501)

Set the dwell time for a value between 0.1 seconds (1) and 1 second (0). Each number increase on the switch is a 0.1 second increase in dwell time.

Mode Select (SW502)

Use Mode Select SW502 to select the type of cycling operation. Refer to the Operation section.



STARTUP

- Verify that no foreign conductive material is present on the printed circuit board.
- Ensure that all switches are properly set.

1. Turn the speed adjust potentiometer full counterclockwise (CCW).
2. Apply AC line voltage.
3. Enable the drive if using an enable switch on SO502. Otherwise, make sure the factory installed jumper is in place.
4. Slowly advance the speed adjust potentiometer clockwise (CW). The motor slowly accelerates as the potentiometer is turned CW. Continue until the desired speed is reached.
5. Remove AC line voltage from the drive to coast the motor to a stop.

No part of this document may be reproduced or retransmitted in any form without written permission from American Control Electronics®. The information and technical data in this document are subject to change without notice. American Control Electronics® makes no warranty of any kind with respect to this material, including, but not limited to, the implied warranties of its merchantability and fitness for a given purpose. American Control Electronics® assumes no responsibility for any errors that may appear in this document and makes no commitment to update or to keep current the information in this document.

Operation



Half Cycle Mode

1. Press the FWD pushbutton for forward motor rotation.
2. The motor will rotate in the forward direction until the forward limit switch opens.
3. Press the REV pushbutton for reverse motor rotation.
4. The motor will rotate in the reverse direction until the reverse limit switch opens.



Single Cycle Mode

1. Press the FWD pushbutton for forward motor rotation.
2. The motor will rotate in the forward direction until the forward limit switch opens.
3. When the forward limit switch opens, the motor stops and dwells at a time determined by the dwell switch SW501.
4. The motor automatically starts in the reverse direction until the reverse limit switch opens.
5. When the reverse limit switch opens, the motor stops.



Auto Cycle

1. Press the FWD pushbutton for forward motor rotation.
2. The motor will rotate in the forward direction until the forward limit switch opens.
3. When the forward limit switch opens, the motor stops and dwells at a time determined by the dwell switch SW501.
4. The motor automatically starts in the reverse direction until the reverse limit switch opens.
5. When the forward limit switch opens, the motor stops and dwells at a time determined by the dwell switch SW501.
6. The motor automatically starts in the forward direction and the process is continuously repeated until the stop switch is closed.



Single Cycle with One Limit Switch

1. Press the FWD pushbutton for forward motor rotation or the REV pushbutton for reverse motor rotation.
2. The motor will rotate until the limit switch opens or the stop switch is closed.

Jog Mode

1. Press the JOG pushbutton.
2. Press and hold the FWD pushbutton to jog in the forward direction. Press and hold the REV pushbutton to jog in the reverse direction.

TOP BOARD

Forward Jog (FWD JOG): The FWD JOG trim pot determines the motor speed in the forward direction when jogging. To calibrate the FWD JOG:

1. Press the JOG pushbutton.
2. Press and hold the FWD pushbutton.
3. Adjust the FWD JOG trim pot until the desired speed is reached.

Reverse Jog (REV JOG): The REV JOG trim pot determines the motor speed in the reverse direction when jogging. To calibrate the REV JOG:

1. Press the JOG pushbutton.
2. Press and hold the REV pushbutton.
3. Adjust the REV JOG trim pot until the desired speed is reached.

Dwell Time (DWEELL TIME): Refer to select switch SW501 in the Startup section.

Calibration

BOTTOM BOARD

Minimum Speed (MIN SPD): The MIN SPD setting determines the minimum motor speed when the speed adjust potentiometer is set for minimum speed. It is factory set for zero speed. The minimum speed applies only when the drive is operating in unidirectional mode. To calibrate the MIN SPD:

1. Set the MIN SPD trim pot full CCW.
2. Set the speed adjust potentiometer for minimum speed.
3. Adjust MIN SPD trim pot until the desired minimum speed is reached or is just at the threshold of rotation.

Maximum Speed (MAX SPD): The MAX SPD setting determines the maximum motor speed when the speed adjust potentiometer is set for maximum speed. To calibrate the MAX SPD:

1. Set the MAX SPD trim pot full CCW.
2. Set the speed adjust potentiometer for maximum speed.
3. Adjust MAX SPD trim pot until the desired maximum speed is reached.

Forward Torque (FWD TQ) and Reverse Torque (REV TQ): The FWD TQ and REV TQ settings determine the maximum torque for accelerating and driving the motor in the forward and reverse direction. To calibrate the FWD TQ:

1. With the power disconnected from the drive, connect a DC ammeter in series with the armature.
2. Set the FWD TQ trim pot to minimum (full CCW).
3. Set the speed adjust potentiometer to maximum forward speed (full CW).
4. Carefully lock the motor armature. Be sure that the motor is firmly mounted.
5. Apply line power. The motor should be stopped.
6. Slowly adjust the FWD TQ trim pot CW until the armature current is 150% of motor rated armature current.
7. Turn the speed adjust potentiometer to minimum speed (full CCW).
8. Remove line power.
9. Remove the stall from the motor.
10. Remove the ammeter in series with the motor armature if it is no longer needed.

To calibrate the REV TQ:

1. Follow the steps for calibrating the forward torque using the REV TQ trim pot and with the motor set to run in the reverse direction.

IR Compensation (IR COMP): The IR COMP setting determines the degree to which motor speed is held constant as the motor load changes. To calibrate the IR COMP:

1. Set the IR COMP trim pot full CCW.
2. Increase the speed adjust potentiometer until the motor runs at midspeed without load. A handheld tachometer may be used to measure motor speed.
3. Load the motor armature to its full load armature current rating. The motor should slow down.
4. While keeping the load on the motor, rotate the IR COMP trim pot until the motor runs at the speed measured in step 2. If the motor oscillates (overcompensation), the IR COMP trim pot may be set too high (CW). Turn the IR COMP trim pot CCW to stabilize the motor.
5. Unload the motor.

Forward Acceleration (FWD ACC): The FWD ACC setting determines the time the motor takes to ramp to a higher speed in the forward direction or to a lower speed in the reverse direction. To calibrate the FWD ACC, turn the FWD ACC trim pot CW to increase the forward acceleration time, and CCW to decrease the forward acceleration time.

Reverse Acceleration (REV ACC): The REV ACC setting determines the time the motor takes to ramp to a higher speed in the reverse direction or to a lower speed in the forward direction. To calibrate the REV ACC, turn the REV ACC trim pot CW to increase the reverse acceleration time, and CCW to decrease the reverse acceleration time.

Tachogenerator Feedback (TACH): The TACH setting, like IR COMP setting, determines the degree to which motor speed is held constant as the motor load changes. To calibrate the TACH trim pot:

1. Connect the tachogenerator to T1 and T2. The polarity is positive (+) for T1 and negative (-) for T2 when the motor is running in the forward direction.
2. Set the feedback select switch SW504 to ARM for armature feedback.
3. Set the speed adjust potentiometer to maximum speed. Measure the armature voltage across A1 and A2 using a voltmeter.
4. Set the speed adjust potentiometer to zero speed.
5. Set SW504 to TACH for tachogenerator feedback.
6. Set the IR COMP trim pot to full CCW.
7. Set the TACH trim pot to full CW.
8. Set the speed adjust potentiometer to maximum speed.
9. Adjust the TACH trim pot until the armature voltage is the same value as the voltage measured in step 3.

Check that the TACH is properly calibrated. The motor should run at the same set speed when SW504 is set to either ARM or TACH.

Deadband (DB): The deadband trim pot determines the time that will elapse between the application of current in one direction before current is applied in the opposite direction. The deadband trim pot affects the resistance that a motor has to changes in shaft position at zero speed. Deadband is factory calibrated to approximately the 3 o'clock position for 60 Hz AC line operation. Recalibrate the deadband to the 9 o'clock position for 50 Hz operation. If you hear motor noise (humming), the deadband might be set too high. Turn the deadband trim pot CCW until the motor noise ceases.